

HORE tekaška jakna

LIEGI

Composition:

1st layer	100 % PES
2nd layer	membrana idrofilica 100% PES.
3rd layer	94% PES + 6% EA

weight - width:

weight	115 g/m ² ± 5%
height	145 cm ± 2%

breathability

WDD (ASTM E96-66 B): ca. 2.400 g/m² . 24h

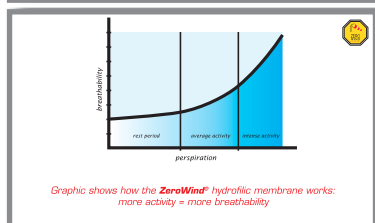
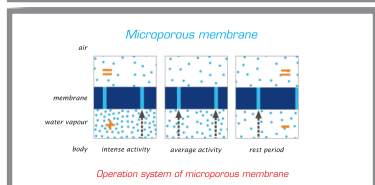
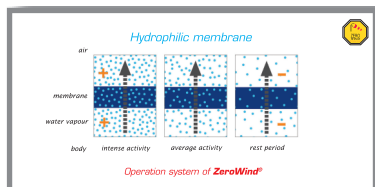
RET: ca. < 20 m² . Pa/W

membrane water column

Water column: ≥ 8.000 mm (8 m)



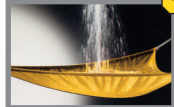
How ZeroWind® works



ZeroWind® and its 3 core skills

Waterproof

ZeroWind® is really water-proof



Windproof

ZeroWind® is an efficient wind-proof and create a protective and comfortable shell



Breathable

Thanks to its hydrophilic structure, ZeroWind® breathes in a dynamic way

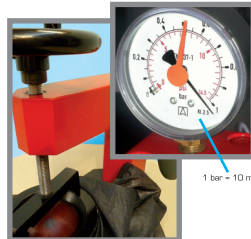


THE TESTER how to use it

1. Fill a cup with a hot drink
2. Place the back of the tester, where the membrane is, over the cup
3. Wait a few seconds, then open the tester
4. You will find out that the water vapour has gone through the membrane tarnishing the mirror

PRESSION TEST

Our tests confirm the water-proof capacity of ZeroWind®. In the picture, a light fabric (only 45 grams) resists to more than 10 metres of water column.



SOME TECHNICAL INFORMATION

As ZeroWind® is an hydrophilic membrane, it can transpire in the same way from both sides. In fact the passage of water vapour is due to the temperature difference between the internal layer (the warmer one) and the external side (colder). In many cases the customer can choose which layer he wants to use as internal or external.

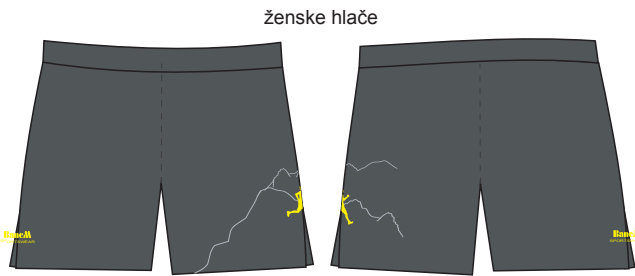
On the ready-to-be-printed ZeroWind® fabrics, should be used the usual technologies at a temperature ranging from 180°C to 210°C for 40 min to 50/60 mins. We always recommend our customers to make previous print tests before proceeding with industrial production, in order to find and fix the right parameters.

MARKETING

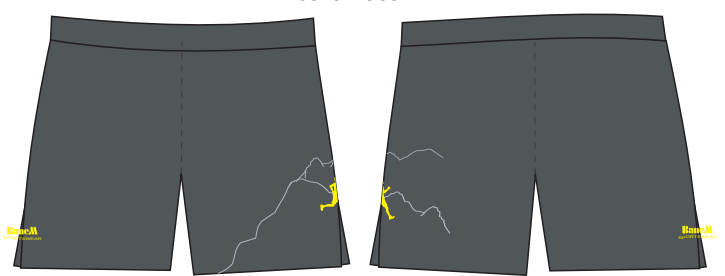




moška tek.majica
brez rokavov



ženske hlače



moške hlače

NDP34, SAJON

Composition:

100 % PES COOLMAX

weight - width:

weight 135 g/m² ± 5%

height 145 cm ± 2%





ženska
atletska majica



moška tekaška
majica SCORPY



ženska majica NAOS
1/8 rokav

FULL MOON

Composition:

86 % PES
14 % Elastane

weight - width:

weight 135 g/m² ± 5%

height 145 cm ± 2%

All the hydrophilic fabrics of both polyester/ea and nylon/ea composition, light weight and high breathable by composition and knitting structures, have the FRESHFEEL technology that ensures a cooling effect and quick dry features suitable for summer training and performance in hottest conditions.

Features:



Hidrophilic



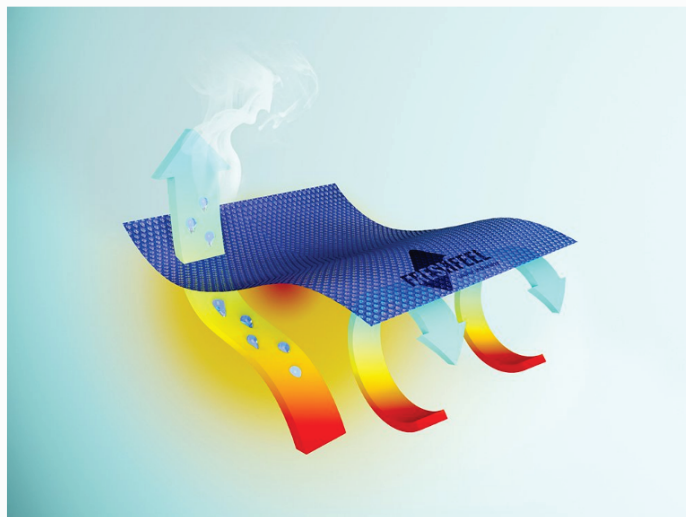
Non-see-Through



4 way stretch

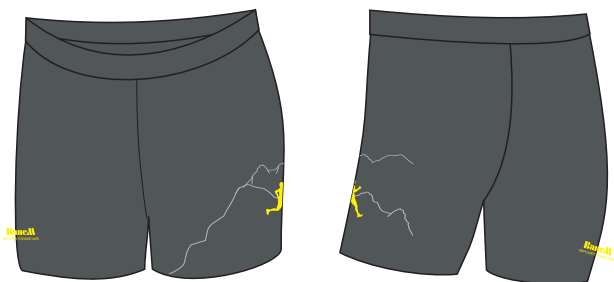


UVupf

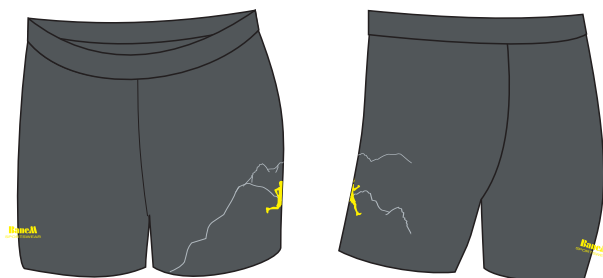




ženske tekaške hlače



moške tekaške hlače



Igloo by Carvico: made of extra matt polyester, it is ideal for transfer printing and enhances the brightness of colors. Thanks to its innovative construction, Igloo is more compact than traditional polyester fabrics and offers an extraordinary yield in its white version. Resistant to chlorine, pilling and abrasions, it is also UV protective (UPF 50+), and boasts an excellent shaping power.

Composition:

87 % PES
13 % Elastane

weight - width:



weight 250 g/m² ± 5%

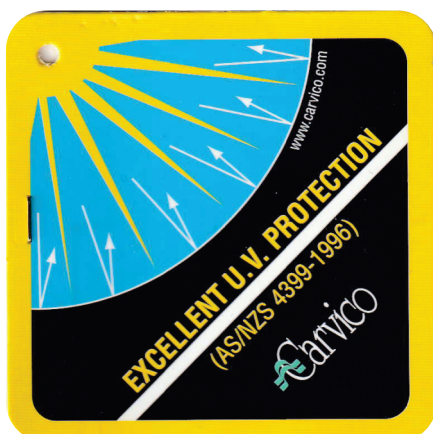
height 150 cm ± 2%

FABRIC FEATURES

-  Excellent coverage
-  UV protection
-  Ultra flat
-  Shape retention
-  Perfect fit
-  Two-way stretch
-  Pilling resistant

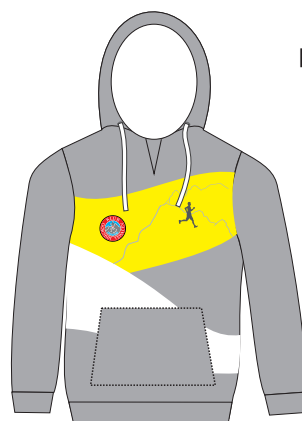
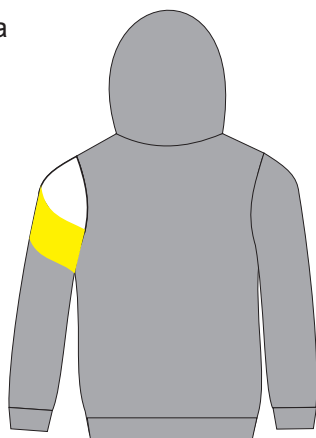
TREATMENTS ON REQUEST

-  Bacteriostatic
-  Water repellent

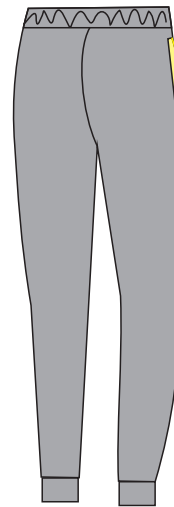
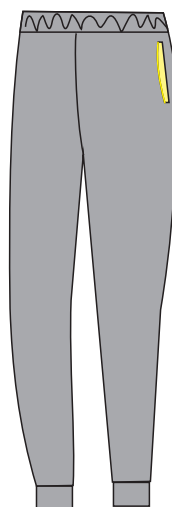
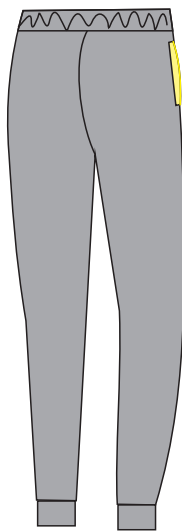
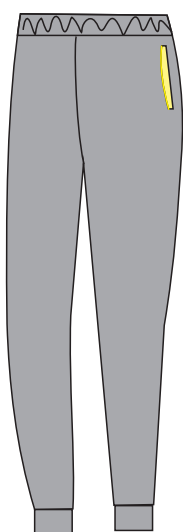
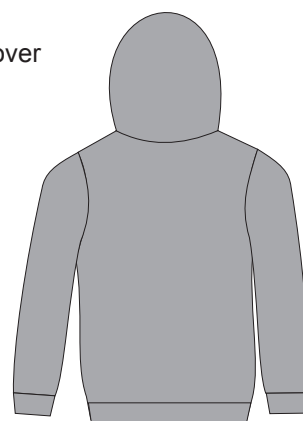




jopica



pulover



BOMBAŽ

Composition:

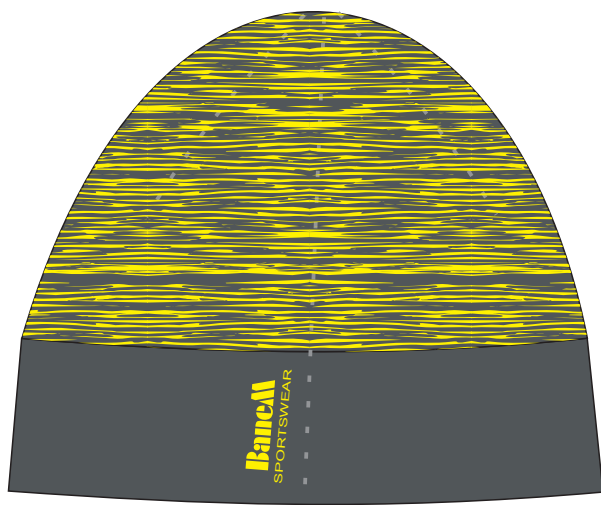
95 % COTTON
5 % Elastane

weight - width:

weight

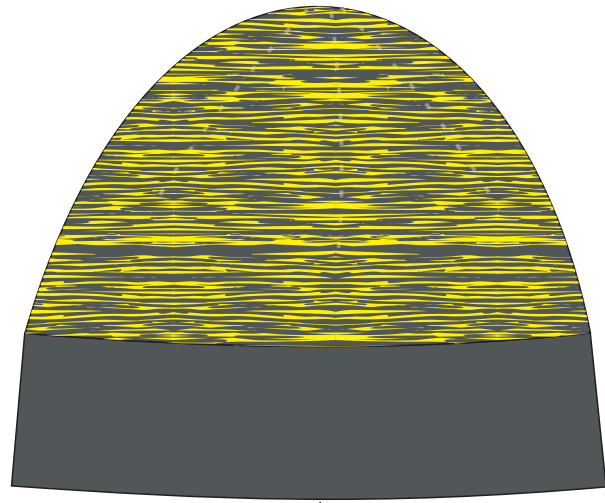
250 g/m² ± 5%

kapa skica



zadaj

s strani



spredaj

s strani

Composition:

83 % PES
17 % Elastane

weight - width:

weight

150 g/m² ± 5%